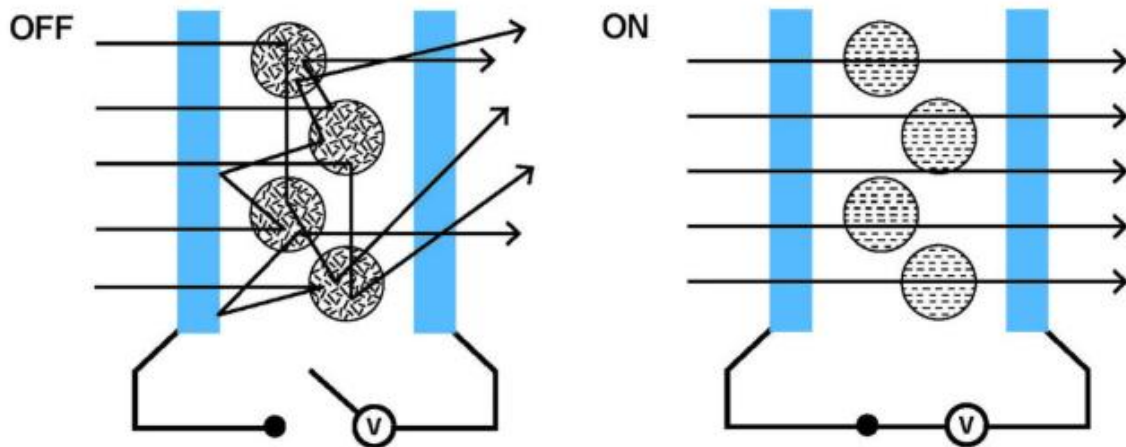


PDLC Switchable Privacy Glass

Description: ProCurve PDLC (polymer dispersed liquid crystal) Switchable Privacy Glass incorporates Polyvision™ Privacy Film in a laminate construction. The Polyvision™ Privacy Film is made of two layers of transparent conductive films sandwiched with PDLC material. The film is then laminated between two pieces of glass. When electricity is applied to the film the liquid crystals line up and the window is clear. When the power is turned off, the liquid crystals return to their normal scattering positions and turn the glass from clear to translucent.

The outside glass plies are typically 3/16" clear glass. However, other thicknesses of glass are available. PVB interlayer traps and holds the liquid crystal privacy film. The film is made up of electrically conductive coatings, a polymer matrix and liquid crystals. This film has electrical wiring to be connected to a transformer to supply power for the "on" (clear state) mode.



Copyright Polytronix

Dimensions:

Maximum size 70" x 120"

Glass Type:

Annealed, Tempered, Chemically strengthened (all laminated)

Glass Color:

Clear, Bronze, Grey, Green



Optical Data:

Transmission (VLT): Approx. 75%
Straight on Haze: Approx. 6%
Off Angle Haze (45°): Approx. 5%
Scattering effectiveness: Approx. one inch
Solar Heat Gain Coefficient (SHGC): Less than 0.10 (off-state)
0.40-0.60 (on-state)
Infrared (IR) 1% (off-state)
50% (on-state)

Switching Time

Approx. 75 milliseconds at room temperature

Electrical Requirements:

Driving Voltage: 65 ± 5V AC
Current: Less than 20 mA/ft² (215 mA/m²) @ room temperature
Power: Less than 0.5 VA/ft² (5 watt/m²)

Installation Data:

Standard wire leads are 36". The placement of the leads is based on customer requirements. Additional installation information is available upon request.

Applications:

Conference rooms, hospitals, shower doors, yachts, trains, vehicle partitions

References:

Polytronix
www.polytronixglass.com